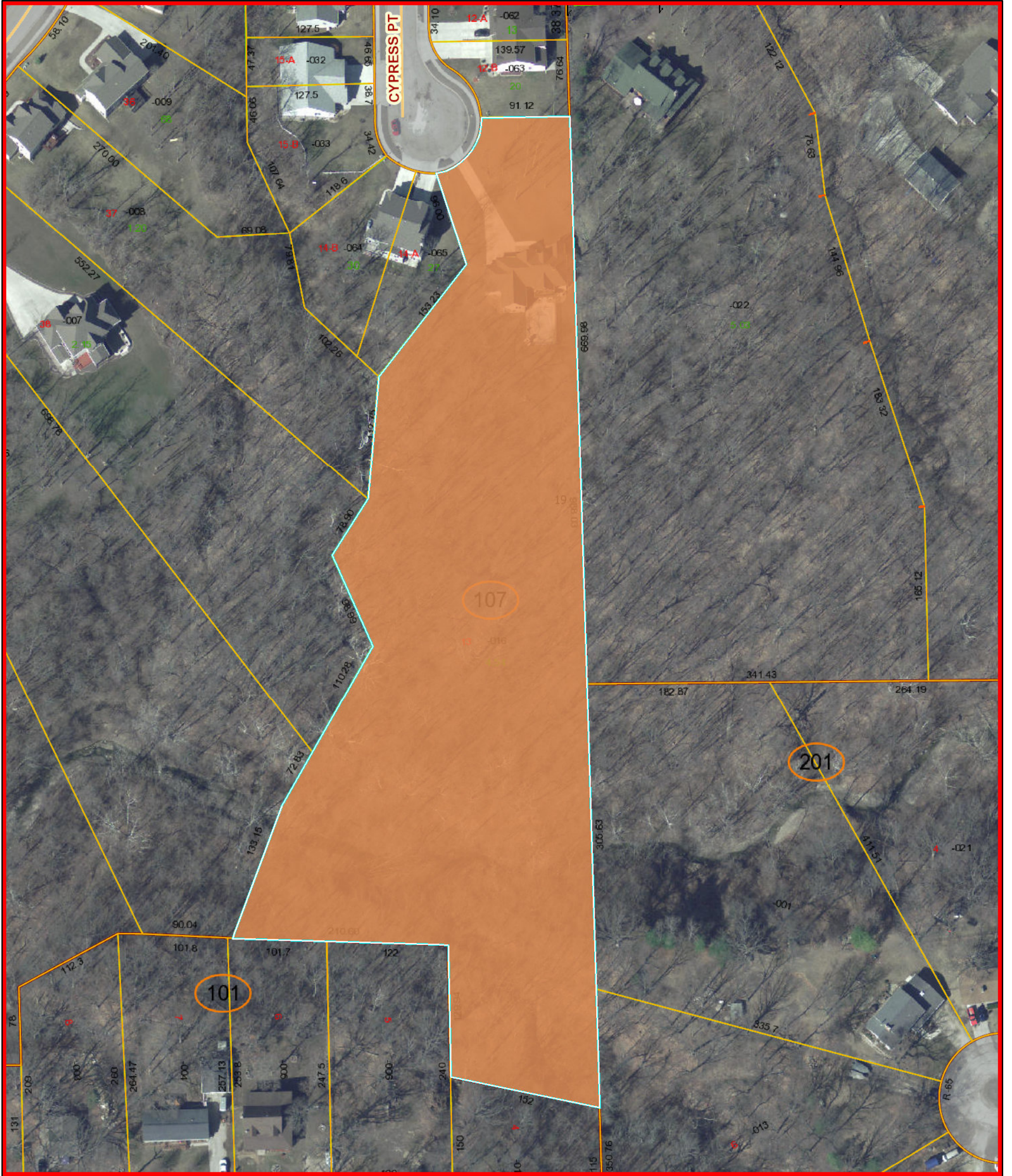


315 CYPRESS POINT, WASHINGTON



- | | |
|----------------------|--------------------|
| — I-155 | — Hook 100 |
| — I-474 | — Hook 400 |
| — I-74 | — Tip 100 |
| — IL 29 | — Tip 400 |
| — IL 98 | — Sections |
| — US 150 | — OwnershipParcels |
| — US 24 | — TaxParcels |
| — Streets | — Blocks |
| Symbols | — ROW |
| — <all other values> | — Lots |
| — Arrow 100 | — Hydrography |
| — Arrow 400 | |
| — FromTo 100 | |
| — FromTo 400 | |

Tazewell County GIS parcel and map records contained herein are for property tax purposes only. This information has been compiled from the most accurate source data from the public records of Tazewell County. This information must be accepted and used with the understanding that the data was collected primarily for the use and purpose of creating a Property Tax Roll per Illinois Statute. The information contained herein is for reference purposes only, and should not be relied upon as a substitute for a title search. Any reliance on the information contained herein is at the user's own risk. The Tazewell County GIS assumes no responsibility for any use of the information contained herein or any loss resulting therefrom. Users of Tazewell County GIS site assume all risk and liability when accessing any third-party site linked to this site. All data is subject to change.

Tazewell County, IL

